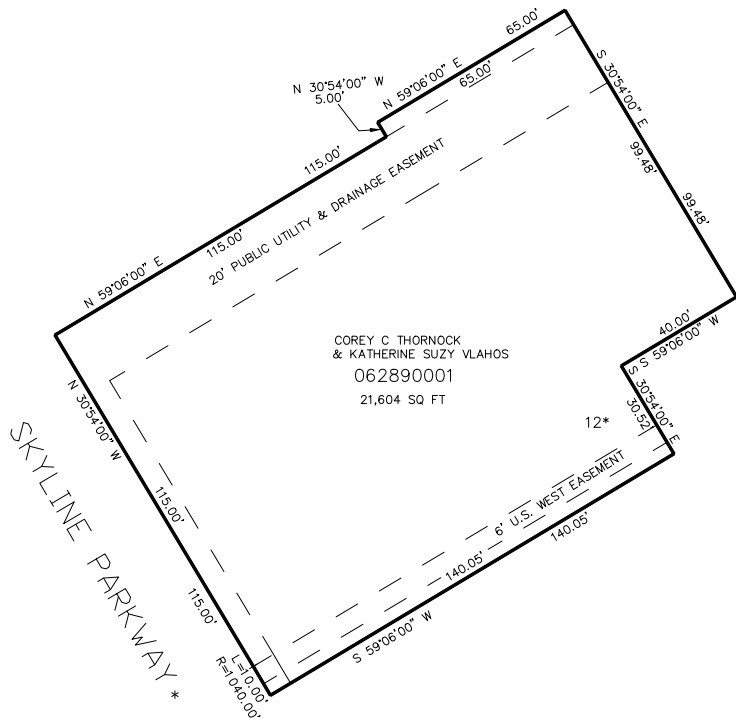


PART OF THE NE.1/4, OF SECTION 10, T.5N., R.1W., S.L.B. & M.
AMENDED LOTS 12 AND 13, OAK VIEW ESTATES PHASE ONE

TAXING UNIT: 25

IN OGDEN CITY
SCALE 1" = 30'

SEE PAGE 181



SEE PAGE 181

*FOR ALL OTHER EASEMENT AND LOT INFORMATION SEE DED. PLAT

SEE PAGE 86

FOR COMPLETE ENG DATA SEE
ORIGINAL DEDICATION PLAT IN
BOOK 59, PAGE 30 OF RECORDS.

10' UTILITY & DRAINAGE EASEMENTS EACH
SIDE OF PROPERTY LINES AS INDICATED
BY DASHED LINES EXCEPT AS OTHERWISE
SHOWN.